

# FRIEZE MASTERS 2013

## WEIBSBILDER

### SELECTED DRAWINGS 1913 - 1983

We are very pleased to present an extraordinary exhibition of twentieth century drawings from 1913-1983 at Frieze Masters. The human form has served as inspiration for artistic work since the earliest drawings, and our show is dedicated in particular to the curves and shapes of women.

A special highlight is the release of 40 early drawings by renowned German artist George Grosz (1893-1959). These drawings were made at the beginning of the artist's career in 1913 and rediscovered in his estate 100 years later. Most of them have not been previously exhibited. His sparse drawing style is minimalistic and expressive – not a single line is wasted. Grosz's figures appear to be transparent and yet are full of character and movement. These exceptional works are being shown alongside drawings by Andy Warhol, whose controversial "Nosepicker" Grosz famously defended while Warhol was a student in Pittsburgh. The artists' early works display a similar use of line which can be fully appreciated when viewed together.

Other highlights of our show include a number of A. R. Penck's 1960s stylised pencil drawings on paper, which have never before been seen by the public, alongside a selection of remarkable drawings from the 1970s by Georg Baselitz and Anselm Kiefer, among others.



**DANIEL BLAU**

Frieze Masters 2013  
Regent's Park, London

Booth B12 - please access  
via Gloucester Gate

Preview: October 15 - 16  
Exhibition: October 17 - 20,  
12 - 7 pm

For further information about  
our exhibition please email:  
[contact@danielblau.com](mailto:contact@danielblau.com)

Left: **George Grosz (1893-1956)**  
"Sitzender Akt von hinten, rechts  
Abgestützt"  
1913/1914

black and brown ink (reed pen  
and pen) and graphite on  
chamoise paper  
20,9 x 27,9cm

Courtesy: Daniel Blau Munich/London  
© George Grosz

Galerie Daniel Blau  
Odeonsplatz 12  
80539 München  
Germany  
tel +49 (0)89 29 73 42

Daniel Blau  
51 Hoxton Square  
London  
N1 6PB  
tel +44 (0)207 831 7998

[www.danielblau.com](http://www.danielblau.com)



**George Grosz (1893-1956)**

“Akt mit untergeschlagenen Beinen  
seitlich sitzend, Arme seitlich  
ausgestreckt”

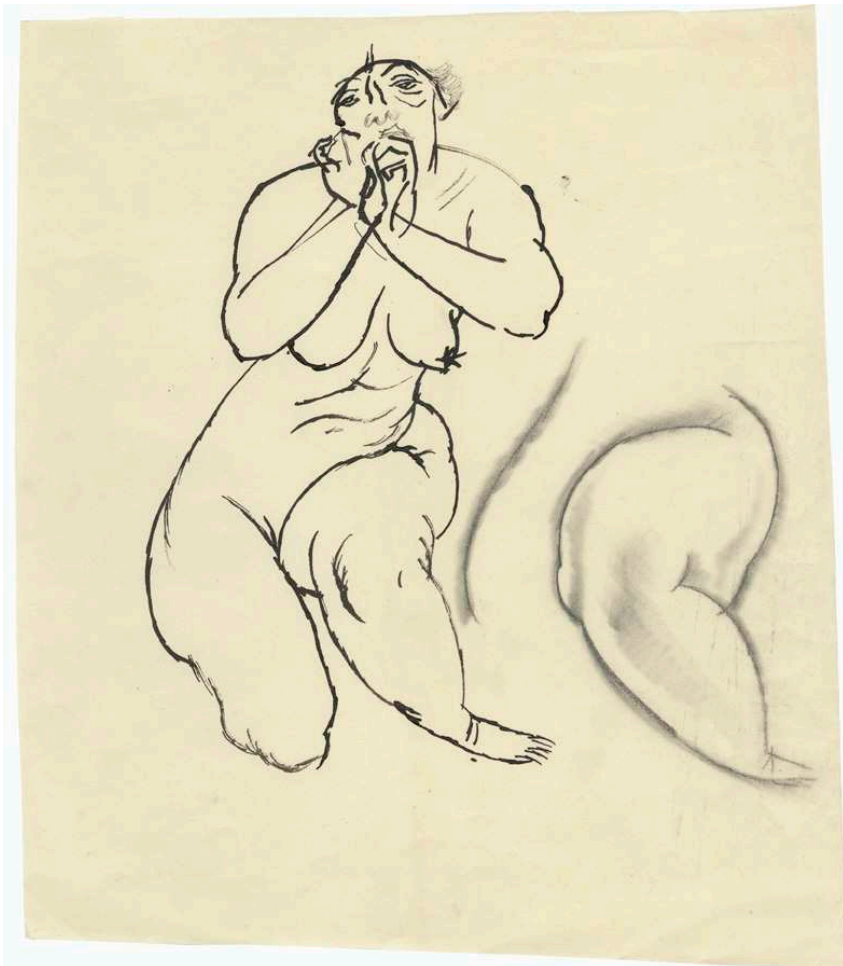
1914

black ink (reed pen  
and pen) on light brown heavy  
paper; perforated along the left and  
right sides

32,4 x 26,7 cm

Courtesy: Daniel Blau Munich/London

© George Grosz



**George Grosz (1893-1956)**

“Akt halb hockend, nach oben  
schauend”

1914

black ink (reed pen and pen) and  
graphite on chamoise paper

31,7 x 27 cm

Courtesy: Daniel Blau Munich/London

© George Grosz



**Anselm Kiefer (\*1945)**

“Nulla dies sine linea”

1976

graphite on paper

43,9 x 30,8 cm

Courtesy: Daniel Blau Munich/London

© Anselm Kiefer



**Antonius Höckelmann (1937-2000)**

n.t.

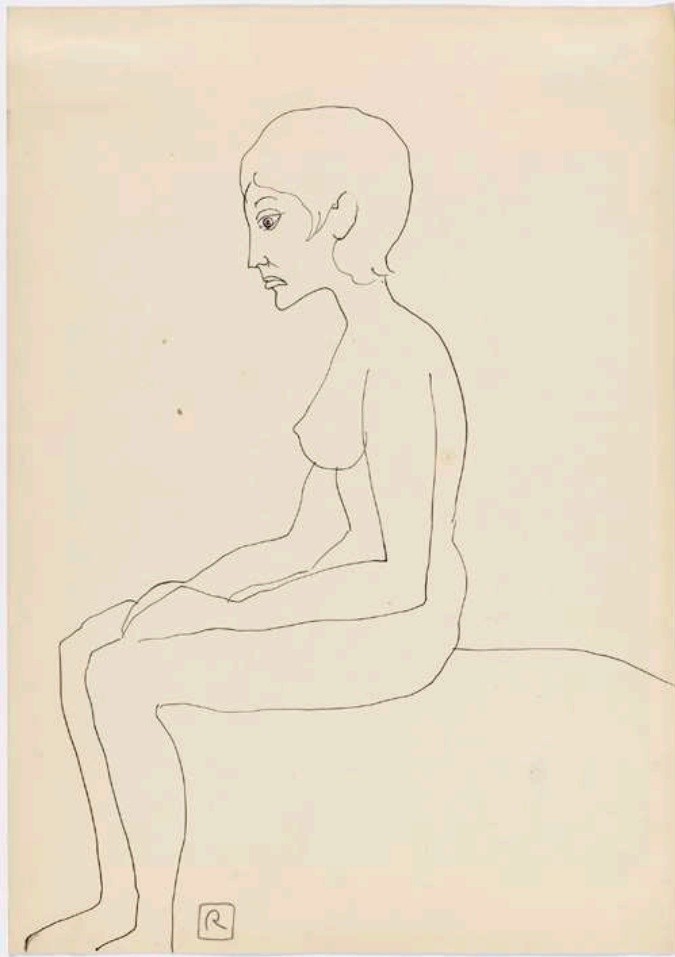
1979

ink on dyed paper

35,2 x 25,2 cm

Courtesy: Daniel Blau Munich/London

© Antonius Höckelmann



**A. R. Penck (\*1939)**

"n.t."

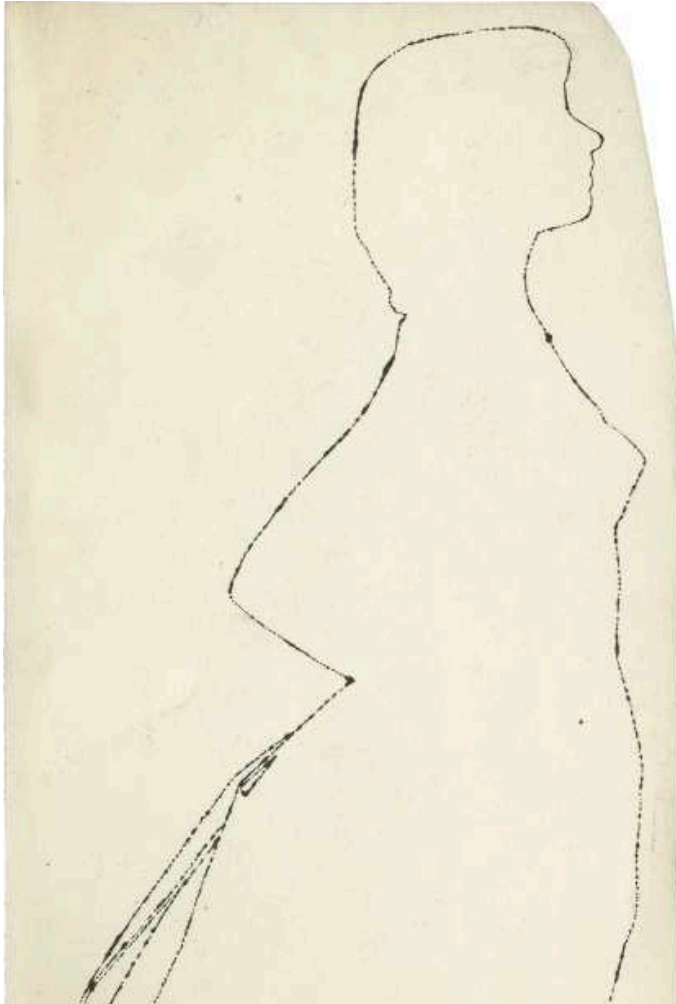
c.1965

graphite on paper

42 x 29,6 cm

Courtesy: Daniel Blau Munich/London

© A. R. Penck



**Andy Warhol (1928-1987)**

"n.t. (Woman in Profile)"

c.1953

ink on paper

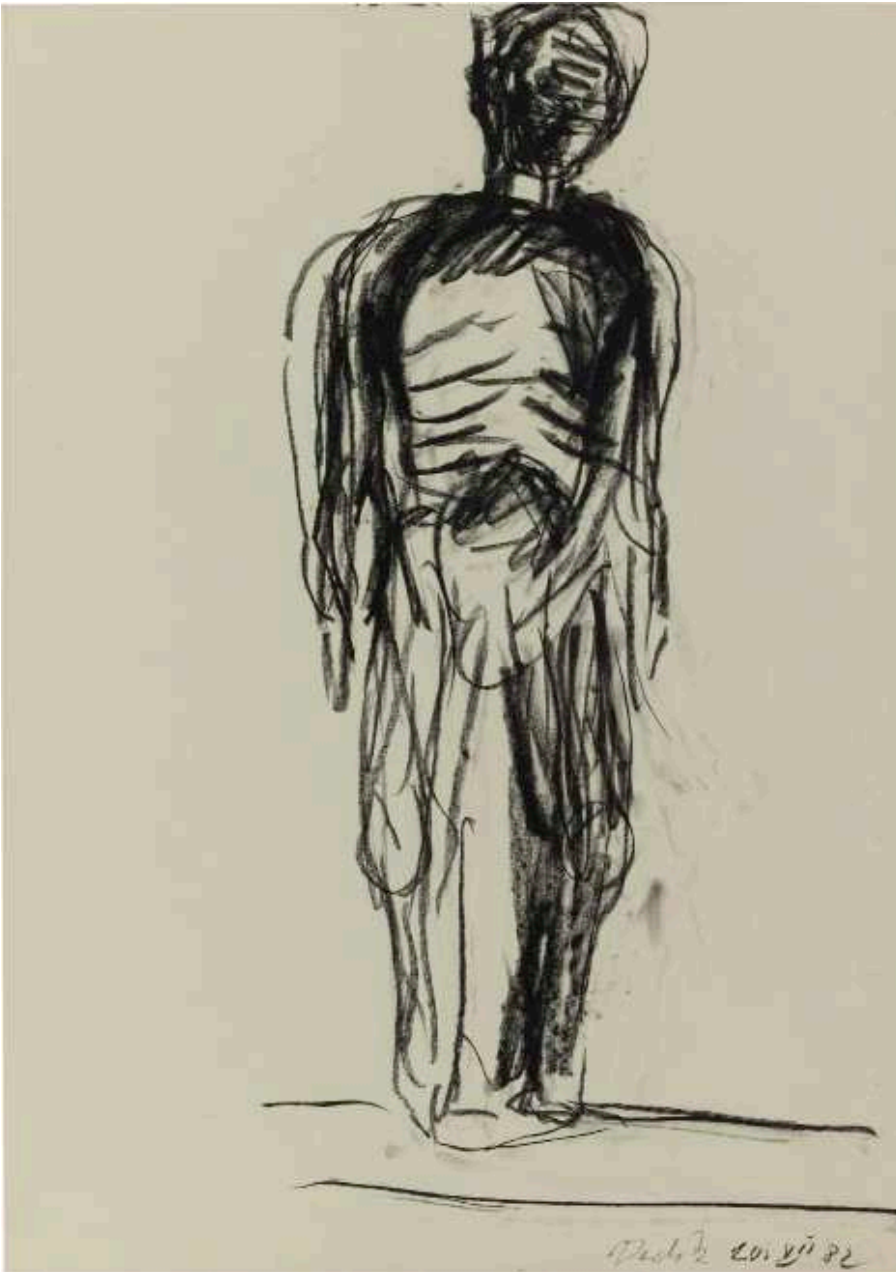
27,2 x 14,8 cm

Courtesy: Daniel Blau Munich/London

© 2013 The Andy Warhol Foundation

for the Visual Arts, Inc. / Artists Rights

Society (ARS), New York



**Georg Baselitz (\*1938)**

“Skulptur I-III”

1982

charcoal on board, series of three drawings

60,9 × 43,3 cm

Courtesy: Daniel Blau Munich/London

© Georg Baselitz